

ICH Series

Radial Choke Inductors With Plastic Base

TRIGON
COMPONENTS



FEATURES

- Open magnetic circuit construction.
- Low cost and high reliability.

APPLICATION

- Notebook, Inkjet printer, Copying machine, Cellular phone, ADSL modem, Televisions, CRT displays, Printers and other electronic products, etc.

ORDERING CODE

ICH 0605 M 220 T
(1) (2) (3) (4) (5)

(1) Radial Choke Inductors

(2) Size
0605, 0606, 0805, 0807
0809

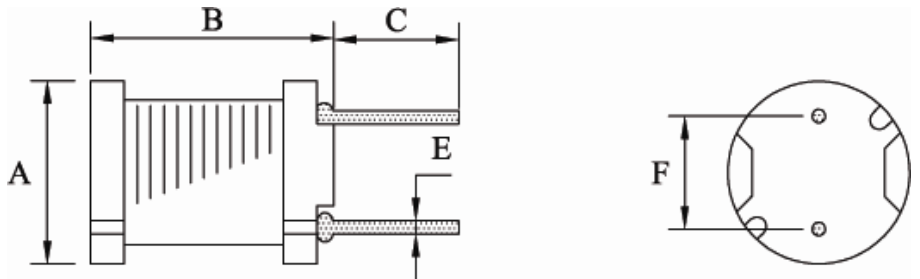
(3) Tolerance Code:
J: 5%, K: 10%, L: 15%
M: 20%, N: 30%, Y: min.

(4) Inductance: μ H

(5) Package

※Please refer to complete
Ordering Code (ICH-Ord) for
more ordering options.

Configurations:



Dimension (mm)

Item	A (max)	B (max)	C ± 1.0	E ± 0.05	F ± 0.5
ICH0605	6.5	5.0	4.0	0.50	4.0
ICH0606	6.5	6.5	4.0	0.50	4.0
ICH0805	8.3	5.5	5.0	0.65	5.0
ICH0807	8.3	7.5	5.0	0.65	5.0
ICH0809	8.3	9.5	5.0	0.65	5.0
ICH0810	10	13	5.0	0.60	5.0

※Design as Customer's Requested Specifications.

Inductance Range

Item	μ H
ICH0605	22.0 ~ 1000
ICH0606	22.0 ~ 1000
ICH0805	10.0 ~ 10000
ICH0807	10.0 ~ 10000
ICH0809	10.0 ~ 47000
ICH0810	2.20~ 100000

ICH Series

Radial Choke Inductors – ICH0605

TRIGON
COMPONENTS

Electrical Characteristics for ICH0605 Series

Part Number	Inductance (μ H)	Test Freq. (KHz)	DCR (Ω) (max)	IDC (A) (max)
ICH0605M220	22.00	1	0.180	0.90
ICH0605M270	27.00	1	0.210	0.81
ICH0605M330	33.00	1	0.270	0.74
ICH0605M390	39.00	1	0.290	0.68
ICH0605M470	47.00	1	0.340	0.62
ICH0605M560	56.00	1	0.420	0.57
ICH0605M680	68.00	1	0.480	0.51
ICH0605M820	82.00	1	0.550	0.47
ICH0605M101	100.00	1	0.680	0.42
ICH0605M121	120.00	1	0.770	0.39
ICH0605M151	150.00	1	0.950	0.35
ICH0605M181	180.00	1	1.150	0.32
ICH0605M221	220.00	1	1.300	0.29
ICH0605M271	270.00	1	1.550	0.26
ICH0605M331	330.00	1	2.180	0.23
ICH0605M391	390.00	1	2.470	0.21
ICH0605M471	470.00	1	2.920	0.20
ICH0605M561	560.00	1	3.970	0.18
ICH0605M681	680.00	1	4.570	0.16
ICH0605M821	820.00	1	5.280	0.15
ICH0605M102	1000.00	1	7.060	0.13

※Test Freq. : 1KHz / 0.25V.

※Operating Temp. : -40°C ~ +85°C

※Inductance drop = 10% typ. at IDC.

ICH Series

Radial Choke Inductors – ICH0606

TRIGON
COMPONENTS

Electrical Characteristics for ICH0606 Series

Part Number	Inductance (μ H)	Test Freq. (KHz)	DCR (Ω) (max)	IDC (A) (max)
ICH0606M220	22.00	1	0.110	1.27
ICH0606M270	27.00	1	0.140	1.14
ICH0606M330	33.00	1	0.170	1.03
ICH0606M390	39.00	1	0.190	0.95
ICH0606M470	47.00	1	0.230	0.87
ICH0606M560	56.00	1	0.260	0.80
ICH0606M680	68.00	1	0.280	0.72
ICH0606M820	82.00	1	0.390	0.66
ICH0606M101	100.00	1	0.430	0.59
ICH0606M121	120.00	1	0.540	0.54
ICH0606M151	150.00	1	0.640	0.48
ICH0606M181	180.00	1	0.740	0.44
ICH0606M221	220.00	1	0.960	0.40
ICH0606M271	270.00	1	1.120	0.36
ICH0606M331	330.00	1	1.480	0.33
ICH0606M391	390.00	1	1.660	0.30
ICH0606M471	470.00	1	1.910	0.27
ICH0606M561	560.00	1	2.310	0.25
ICH0606M681	680.00	1	2.670	0.23
ICH0606M821	820.00	1	3.100	0.21
ICH0606M102	1000.00	1	4.450	0.19

※Test Freq. : 1KHz / 0.25V.

※Operating Temp. : -40°C ~ +85°C

※Inductance drop = 10% typ. at IDC.

ICH Series

Radial Choke Inductors – ICH0805

TRIGON
COMPONENTS

Electrical Characteristics for ICH0805 Series

Part Number	Inductance (μ H)	Test Freq. (KHz)	DCR (Ω) (max)	IDC (A) (max)
ICH0805M100	10.00	1	0.070	2.50
ICH0805M120	12.00	1	0.080	2.40
ICH0805M150	15.00	1	0.090	2.10
ICH0805M180	18.00	1	0.100	2.00
ICH0805M220	22.00	1	0.120	1.70
ICH0805M270	27.00	1	0.140	1.60
ICH0805M330	33.00	1	0.170	1.40
ICH0805M390	39.00	1	0.210	1.30
ICH0805M470	47.00	1	0.240	1.20
ICH0805M560	56.00	1	0.310	1.10
ICH0805M680	68.00	1	0.340	1.00
ICH0805M820	82.00	1	0.400	0.93
ICH0805M101	100.00	1	0.520	0.81
ICH0805M121	120.00	1	0.590	0.76
ICH0805M151	150.00	1	0.710	0.67
ICH0805M181	180.00	1	0.890	0.62
ICH0805M221	220.00	1	1.040	0.54
ICH0805M271	270.00	1	1.280	0.49
ICH0805M331	330.00	1	1.470	0.44
ICH0805M391	390.00	1	1.670	0.41
ICH0805M471	470.00	1	1.950	0.38
ICH0805M561	560.00	1	2.830	0.35
ICH0805M681	680.00	1	3.250	0.32
ICH0805M821	820.00	1	3.820	0.31
ICH0805M102	1000.00	1	5.280	0.25
ICH0805M122	1200.00	1	6.030	0.23
ICH0805M152	1500.00	1	7.150	0.21
ICH0805M182	1800.00	1	8.260	0.20
ICH0805M222	2200.00	1	11.100	0.18
ICH0805M272	2700.00	1	13.100	0.16
ICH0805M332	3300.00	1	15.900	0.14
ICH0805M392	3900.00	1	18.000	0.13
ICH0805M472	4700.00	1	23.900	0.12
ICH0805M562	5600.00	1	26.800	0.11
ICH0805M682	6800.00	1	31.700	0.098
ICH0805M822	8200.00	1	46.500	0.088
ICH0805M103	10000.00	1	55.700	0.081

※Test Freq. : 1KHz / 0.25V.

※Operating Temp. : -40°C ~ +85°C

※Inductance drop = 10% typ. at IDC.

ICH Series

Radial Choke Inductors – ICH0807

TRIGON
COMPONENTS

Electrical Characteristics for ICH0807 Series

Part Number	Inductance (μ H)	Test Freq. (KHz)	DCR (Ω) (max)	IDC (A) (max)
ICH0807M100	10.00	1	0.050	2.90
ICH0807M120	12.00	1	0.060	2.50
ICH0807M150	15.00	1	0.070	2.20
ICH0807M180	18.00	1	0.080	1.90
ICH0807M220	22.00	1	0.090	1.80
ICH0807M270	27.00	1	0.110	1.70
ICH0807M330	33.00	1	0.130	1.50
ICH0807M390	39.00	1	0.140	1.30
ICH0807M470	47.00	1	0.150	1.30
ICH0807M560	56.00	1	0.180	1.20
ICH0807M680	68.00	1	0.200	1.10
ICH0807M820	82.00	1	0.240	1.00
ICH0807M101	100.00	1	0.280	0.89
ICH0807M121	120.00	1	0.360	0.81
ICH0807M151	150.00	1	0.420	0.72
ICH0807M181	180.00	1	0.570	0.66
ICH0807M221	220.00	1	0.630	0.57
ICH0807M271	270.00	1	0.880	0.51
ICH0807M331	330.00	1	1.050	0.46
ICH0807M391	390.00	1	1.170	0.44
ICH0807M471	470.00	1	1.340	0.41
ICH0807M561	560.00	1	1.720	0.36
ICH0807M681	680.00	1	1.960	0.33
ICH0807M821	820.00	1	2.560	0.30
ICH0807M102	1000.00	1	2.940	0.27
ICH0807M122	1200.00	1	4.040	0.24
ICH0807M152	1500.00	1	4.700	0.22
ICH0807M182	1800.00	1	5.050	0.20
ICH0807M222	2200.00	1	6.250	0.18
ICH0807M272	2700.00	1	8.720	0.16
ICH0807M332	3300.00	1	10.600	0.15
ICH0807M392	3900.00	1	14.200	0.14
ICH0807M472	4700.00	1	16.700	0.12
ICH0807M562	5600.00	1	18.700	0.11
ICH0807M682	6800.00	1	21.800	0.10
ICH0807M822	8200.00	1	28.700	0.093
ICH0807M103	10000.00	1	33.000	0.084

※Test Freq. : 1KHz / 0.25V.

※Operating Temp. : -40°C ~ +85°C

※Inductance drop = 10% typ. at IDC.

ICH Series

Radial Choke Inductors - ICH0809

TRIGON
COMPONENTS

Electrical Characteristics for ICH0809 Series

Part Number	Inductance (μ H)	Test Freq. (KHz)	DCR (Ω) (max)	IDC (A) (max)
ICH0809M100	10.00	1	0.040	2.60
ICH0809M120	12.00	1	0.040	2.60
ICH0809M150	15.00	1	0.050	2.10
ICH0809M180	18.00	1	0.050	2.00
ICH0809M220	22.00	1	0.060	1.70
ICH0809M270	27.00	1	0.060	1.60
ICH0809M330	33.00	1	0.070	1.40
ICH0809M390	39.00	1	0.080	1.40
ICH0809M470	47.00	1	0.100	1.30
ICH0809M560	56.00	1	0.110	1.20
ICH0809M680	68.00	1	0.140	1.10
ICH0809M820	82.00	1	0.160	1.00
ICH0809M101	100.00	1	0.190	0.90
ICH0809M121	120.00	1	0.220	0.82
ICH0809M151	150.00	1	0.270	0.74
ICH0809M181	180.00	1	0.310	0.71
ICH0809M221	220.00	1	0.380	0.64
ICH0809M271	270.00	1	0.530	0.57
ICH0809M331	330.00	1	0.610	0.51
ICH0809M391	390.00	1	0.690	0.48
ICH0809M471	470.00	1	0.890	0.43
ICH0809M561	560.00	1	1.010	0.40
ICH0809M681	680.00	1	1.180	0.35
ICH0809M821	820.00	1	1.570	0.32
ICH0809M102	1000.00	1	1.840	0.30
ICH0809M122	1200.00	1	2.100	0.27
ICH0809M152	1500.00	1	2.800	0.23
ICH0809M182	1800.00	1	3.210	0.21

Inductor

ICH Series

Radial Choke Inductors – ICH0809

TRIGON
COMPONENTS

Electrical Characteristics for ICH0809 Series

Part Number	Inductance (μ H)	Test Freq. (KHz)	DCR (Ω) (max)	IDC (A) (max)
ICH0809M222	2200.00	1	4.210	0.19
ICH0809M272	2700.00	1	4.940	0.17
ICH0809M332	3300.00	1	6.160	0.15
ICH0809M392	3900.00	1	6.840	0.14
ICH0809M472	4700.00	1	7.890	0.13
ICH0809M562	5600.00	1	11.500	0.12
ICH0809M682	6800.00	1	13.200	0.11
ICH0809M822	8200.00	1	15.200	0.10
ICH0809M103	10000.00	1	22.000	0.089
ICH0809M123	12000.00	1	25.000	0.073
ICH0809M153	15000.00	1	29.100	0.068
ICH0809M183	18000.00	1	38.900	0.066
ICH0809M223	22000.00	1	44.900	0.059
ICH0809M273	27000.00	1	55.700	0.052
ICH0809M333	33000.00	1	64.200	0.048
ICH0809M393	39000.00	1	74.200	0.042
ICH0809M473	47000.00	1	96.400	0.038

※Test Freq. : 1KHz / 0.25V.

※Operating Temp. : -40°C ~ +85°C

※Inductance drop = 10% typ. at IDC.

ICH Series

Radial Choke Inductors – ICH0810

Electrical Characteristics for ICH0810 Series

Part Number	Inductance (μ H)	Test Freq. (KHz)	DCR (Ω) (max)	IDC (A) (max)
ICH0810N2R2	2.20	100	9.5m	7.0
ICH0810N2R7	2.70	100	107m	67
ICH0810N3R3	3.30	100	12.2m	5.8
ICH0810N3R9	3.90	100	14.0m	5.4
ICH0810N4R7	4.70	100	15.5m	5.1
ICH0810N5R6	5.60	100	17.2m	4.7
ICH0810N6R8	6.80	100	18.5m	4.3
ICH0810N8R2	8.20	100	23.5m	4.0
ICH0810N100	10.0	1	27.0m	3.6
ICH0810N120	12.0	1	31.5m	3.1
ICH0810N150	15.0	1	36.0m	2.8
ICH0810N180	18.0	1	40.5m	2.6
ICH0810N220	22.0	1	45.0m	2.5
ICH0810N270	27.0	1	61.0m	2.2
ICH0810N330	33.0	1	70.0m	2.0
ICH0810N390	39.0	1	75.5m	1.8
ICH0810N470	47.0	1	86.5m	1.7
ICH0810N560	56.0	1	0.12	1.5
ICH0810N680	68.0	1	0.13	1.4
ICH0810N820	82.0	1	0.15	1.2
ICH0810N101	100	1	0.18	1.1
ICH0810N121	120	1	0.20	1.0
ICH0810N151	150	1	0.26	0.96
ICH0810N181	180	1	0.30	0.88
ICH0810N221	220	1	0.41	0.78
ICH0810N271	270	1	0.46	0.72
ICH0810N331	330	1	0.53	0.66
ICH0810N391	390	1	0.63	0.62
ICH0810N471	470	1	0.71	0.56
ICH0810N561	560	1	0.88	0.50
ICH0810N681	680	1	1.10	0.46
ICH0810N821	820	1	1.20	0.42
ICH0810N102	1000	1	1.50	0.38
ICH0810N122	1200	1	1.90	0.34
ICH0810N152	1500	1	2.20	0.32

※Test Freq. : 100KHz / 0.3V. 1KHz / 0.3V.

※Operating Temp. : -40°C ~ +85°C

※Inductance drop = 15% typ. at IDC.

ICH Series

Radial Choke Inductors – ICH0810

TRIGON
COMPONENTS

Electrical Characteristics for ICH0810 Series

Part Number	Inductance (μ H)	Test Freq. (KHz)	DCR (Ω) (max)	IDC (A) (max)
ICH0810N182	1800	1	2.70	0.28
ICH0810N222	2200	1	3.40	0.26
ICH0810N272	2700	1	43.0	0.22
ICH0810N332	3300	1	5.00	0.21
ICH0810N392	3900	1	6.00	0.19
ICH0810N472	4700	1	7.20	0.17
ICH0810N562	5600	1	8.20	0.15
ICH0810N682	6800	1	10.0	0.14
ICH0810N822	8200	1	13.0	0.13
ICH0810N103	10000	1	15.0	0.11
ICH0810N123	12000	1	18.0	0.10
ICH0810N153	15000	1	25.0	90m
ICH0810N183	18000	1	30.0	80m
ICH0810N223	22000	1	35.0	70m
ICH0810N273	27000	1	47.0	65m
ICH0810N333	33000	1	54.0	60m
ICH0810N393	39000	1	71.0	55m
ICH0810N473	47000	1	81.0	50m
ICH0810N563	56000	1	92.0	45m
ICH0810N683	68000	1	125.0	40m
ICH0810N823	82000	1	142.0	35m
ICH0810N104	100000	1	192.0	30m

※Test Freq. : 1KHz / 0.3V.

※Operating Temp. : -40°C ~ +85°C

※Inductance drop = 15% typ. at IDC.

Notes:

Trigon Components reserves the rights for revising the content of this catalog without further notification.