

EBLSQ Series

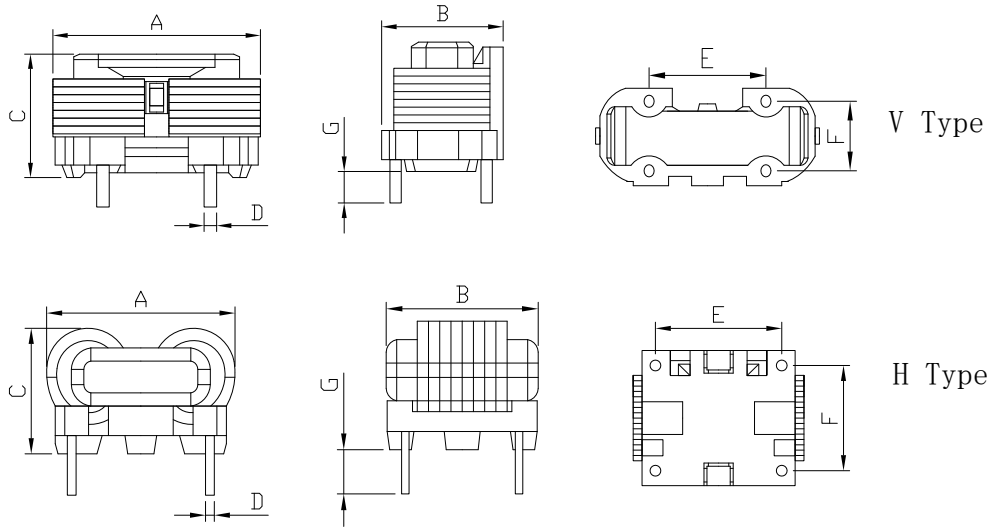
Common Mode Chokes- Frame Core Type

TRIGON
COMPONENTS



EBLSQ1010 Series:

Configuraions:



FEATURES

- Flat Wire Construction
- Small size, Low leakage flux, High rated current.
- Low stray capacitance, Single layer windings provide highest common mode impedance over the widest frequency range.
- High attenuation to the normal mode noise.
- Up to 1KW power rated.
- High insulation between windings
- Low cost and high performance
- RoHS Compliant

APPLICATIONS

- TV display, LED power.
- Switching power supply, Power adapter.
- DC-AC inverter power supply.
- Ballast control, Battery Charger, A/V equipments

ORDERING CODE

EBLSQ **1010** **V** - **15MH**
(1) (2) (3) (4)

- (1) Series Name
- (2) Size Type
- (3) Product Install Style
H: for horizontal type
V: for vertical type
TV: for thin vertical type
- (4) Inductances Value

Dimensions (mm):

ITEM	A Max	B Max	C Max	D ±0.2	E ±0.5	F ±0.5	G ±0.5	Style
EBLSQ1010V	14.0	8.5	13.0	0.7	7.0	5.8	3.0	V
EBLSQ1010H	14.0	12.0	11.5	0.7	8.0	7.0	3.0	H

Electrical Characteristics: @25°C

Item	Inductance L1=L2 (mH) Min	DCR (mΩ) Max.	Rated Current (A)	Turn Ratio (Ts) Ref	WIRE (mm)
EBLSQ1010V-10MH	10	200	0.8-1.2	36	0.1*0.7
EBLSQ1010H-10MH	10	200	0.8-1.2	36	0.1*0.7

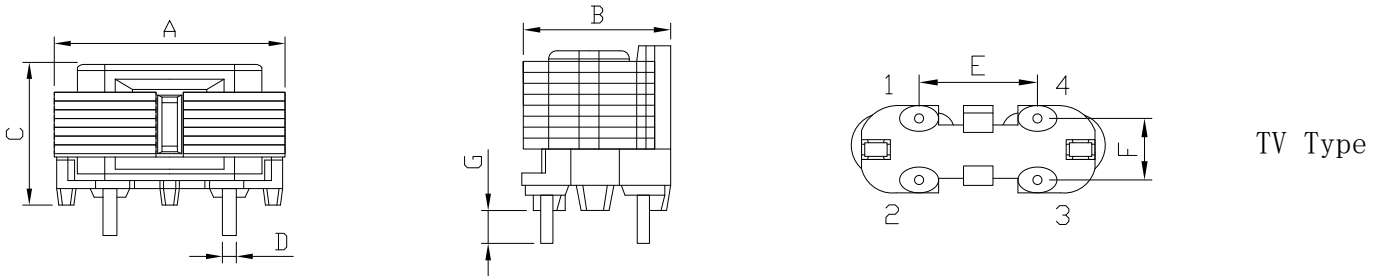
- ※ Inductance test : @1KHz/0.25v
- ※ Hi-Pot: AC1.5KV/60sec
- ※ Operating temperature: -25~+125°C
- ※ Storage temperature: -25~+100°C
- ※ Power range: 36W
- ※ Design as customer's requested specifications

EBLSQ Series

Common Mode Chokes- Frame Core Type
EBLSQ1012 Series

TRIGON
COMPONENTS

Configuraions:



Dimensions (mm):

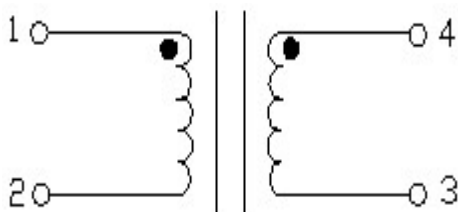
ITEM	A Max	B Max	C Max	D ± 0.2	E ± 0.5	F ± 0.5	G ± 0.5	Style
EBLSQ1012TV	18.5	10.5	16.0	0.8	8.0	6.0	3.0	TV

Electrical Characteristics: @25°C

Item	Inductance L1=L2 (mH) Min	DCR (m Ω) Max.	Rated Current (A)	Turn Ratio (Ts) Ref	WIRE (mm)
EBLSQ1012TV-15MH	15	200	1.0-1.5	41	0.1*1.0
EBLSQ1012TV-10MH	10	180	1.5-2.0	32	0.13*1.0
EBLSQ1012TV-8MH	8	150	1.8-2.2	30	0.15*1.0

- ※Inductance test : @1KHz/0.25v
- ※Hi-Pot: AC1.5KV/60sec
- ※Operating temperature: -25~+125°C
- ※Storage temperature: -25~+100°C
- ※Power range: 20-60W
- ※Design as customer's requested specifications

Recommended Board Layout & Circuits:

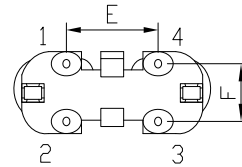
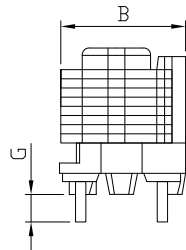
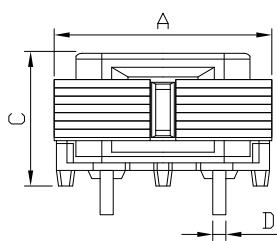


EBLSQ Series

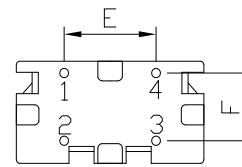
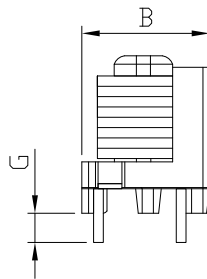
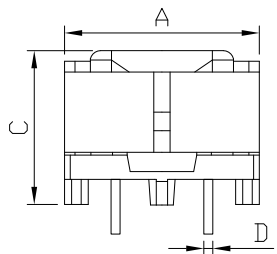
Common Mode Chokes- Frame Core Type
EBLSQ1212 Series:

TRIGON
COMPONENTS

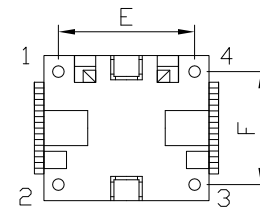
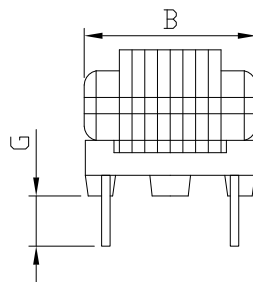
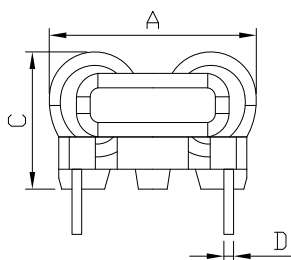
Configuraions:



TV Type



V Type



H Type

Dimensions (mm):

ITEM	A Max	B Max	C Max	D ± 0.2	E ± 0.5	F ± 0.5	G ± 0.5	Stype
EBLSQ1212TV	18.5	10.5	16.0	0.8	8.0	6.0	3.0	TV
EBLSQ1212V	18.5	10.5	16.0	0.8	8.0	6.0	3.0	V
EBLSQ1212H	18.5	10.5	16.0	0.8	8.0	6.0	3.0	H

EBLSQ Series

Common Mode Chokes- Frame Core Type
EBLSQ1212 Series:

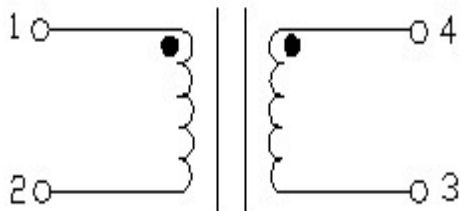
TRIGON
COMPONENTS

Electrical Characteristics: @25°C

Item	Inductance L1=L2 (mH) Min	DCR (mΩ) Max.	Rated Current (A)	Turn Ratio (Ts) Ref	WIRE (mm)
EBLSQ1212TV-15MH	15	240	1.0-1.5	52	0.1*1.0
EBLSQ1212TV-10MH	10	200	1.5-2.0	45	0.13*1.0
EBLSQ1212TV-8MH	8	150	1.8-2.2	38	0.15*1.0
EBLSQ1212V-15MH	15	240	1.0-1.5	52	0.1*1.0
EBLSQ1212V-10MH	10	200	1.5-2.0	45	0.13*1.0
EBLSQ1212V-8MH	8	150	1.8-2.2	38	0.15*1.0
EBLSQ1212H-15MH	15	240	1.0-1.5	52	0.1*1.0
EBLSQ1212H-10MH	10	200	1.5-2.0	45	0.13*1.0
EBLSQ1212H-8MH	8	150	1.8-2.2	38	0.15*1.0

- ※Inductance test : @1KHz/0.25v
- ※Hi-Pot: AC1.5KV/60sec
- ※Operating temperature: -25~+125°C
- ※Storage temperature: -25~+100°C
- ※Power range: 20-60W
- ※Design as customer's requested specifications

Recommended Board Layout & Circuits:

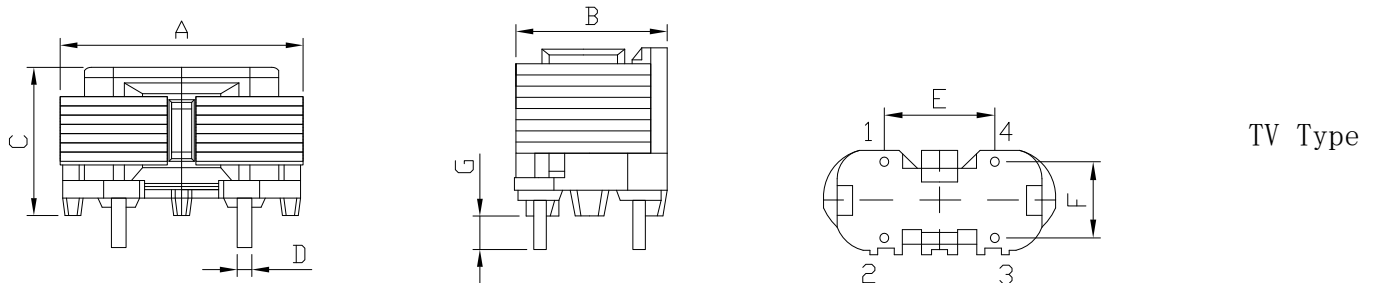


EBLSQ Series

Common Mode Chokes- Frame Core Type
EBLSQ1415 Series:

TRIGON
COMPONENTS

Configuraions:



TV Type

Dimensions (mm):

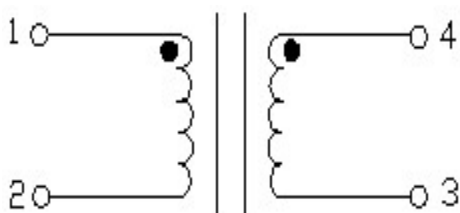
ITEM	A Max	B Max	C Max	D ± 0.2	E ± 0.5	F ± 0.5	G ± 0.5	Fig.
EBLSQ1415TV	21.5	13.0	18.5	0.7	10.0	8.0	3.5	7

Electrical Characteristics: @25°C

Item	Inductance L1=L2 (mH) Min	DCR (m Ω) Max.	Rated Current (A)	Turn Ratio (Ts) Ref	WIRE (mm)
EBLSQ1415TV-28MH	28	320	1.0-1.5	58	0.1*1.0
EBLSQ1415TV-18MH	18	240	1.5-2.0	48	0.13*1.0
EBLSQ1415TV-14MH	14	200	1.8-2.2	44	0.15*1.0
EBLSQ1415TV-12MH	12	160	2.0-2.8	40	0.15*1.5
EBLSQ1415TV-10MH	10	140	2.0-2.5	35	0.2*1.0
EBLSQ1415TV-8MH	8	70	2.5-3.0	32	0.2*1.5

- ※ Inductance test : @1KHz/0.25v
- ※ Hi-Pot: AC1.5KV/60sec
- ※ Operating temperature: -25~+125°C
- ※ Storage temperature: -25~+100°C
- ※ Power range: 60-150W
- ※ Design as customer's requested specifications

Recommended Board Layout & Circuits:

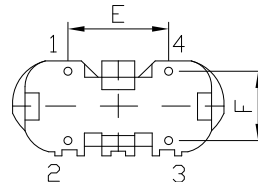
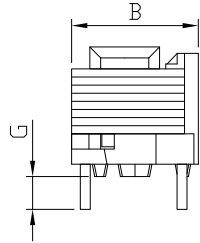
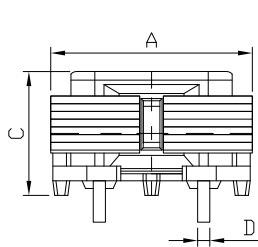


EBLSQ Series

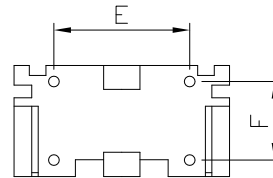
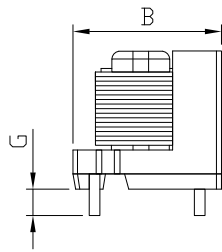
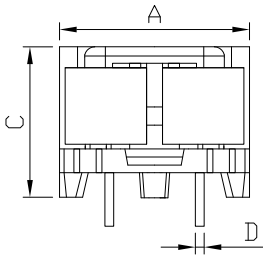
Common Mode Chokes- Frame Core Type
EBLSQ1515 Series:

TRIGON
COMPONENTS

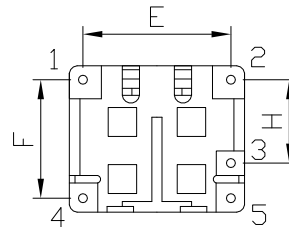
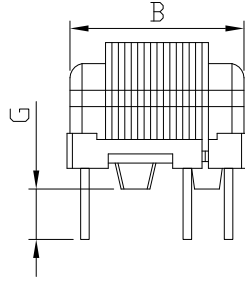
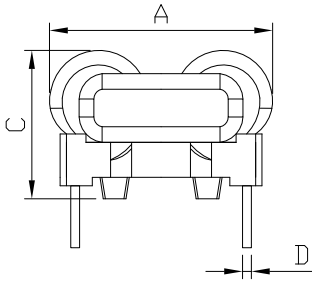
Configuraions:



TV Type



V Type



H Type

Dimensions (mm):

ITEM	A Max	B Max	C Max	D	E ±0.5	F ±0.5	G ±0.5	H ±0.5	Stype
EBLSQ1515TV	22.5	13.0	20.0	0.7±0.2	10.0	8.0	3.5	/	TV
EBLSQ1515V	23.0	15.0	20.5	0.8±0.2	13.0	10.0	3.5	/	V
EBLSQ1515H	21.5	16.5	14.5	0.8±0.1	17.0	12.9	3.5	9.0	H

EBLSQ Series

Common Mode Chokes- Frame Core Type
EBLSQ1515 Series:

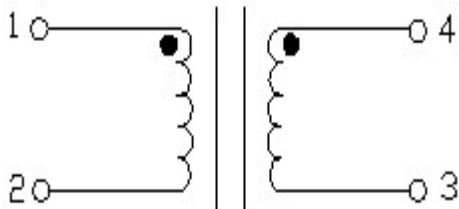
TRIGON
COMPONENTS

Electrical Characteristics: @25°C

Item	Inductance L1=L2 (mH) Min	DCR (mΩ) Max.	Rated Current (A)	Turn Ratio (Ts) Ref	WIRE (mm)
EBLSQ1515TV-30MH	30	350	1.0-1.5	69	0.1*1.0
EBLSQ1515TV-20MH	20	250	1.5-2.0	56	0.13*1.0
EBLSQ1515TV-15MH	15	200	1.8-2.2	50	0.15*1.0
EBLSQ1515TV-15MHA	15	180	2.0-2.8	50	0.15*1.5
EBLSQ1515TV-10MH	10	150	2.0-2.5	40	0.2*1.0
EBLSQ1515TV-10MHA	10	80	2.5-3.0	37	0.2*1.5
EBLSQ1515TV-5MH	5	80	2.5-3.5	32	0.25*1.5
EBLSQ1515V-30MH	30	350	1.0-1.5	69	0.1*1.0
EBLSQ1515V-20MH	20	250	1.5-2.0	56	0.13*1.0
EBLSQ1515V-15MH	15	200	1.8-2.2	50	0.15*1.0
EBLSQ1515V-15MHA	15	180	2.0-2.8	50	0.15*1.5
EBLSQ1515V-10MH	10	150	2.0-2.5	40	0.2*1.0
EBLSQ1515V-10MHA	10	80	2.5-3.0	37	0.2*1.5
EBLSQ1515V-5MH	5	80	2.5-3.5	32	0.25*1.5
EBLSQ1515V-3MH	3	70	3.5-4.5	27	0.3*1.5
EBLSQ1515V-2MH	2	60	5.0-5.0	20	0.4*1.5
EBLSQ1515H-30MH	30	350	1.0-1.5	69	0.1*1.0
EBLSQ1515H-20MH	20	250	1.5-2.0	56	0.13*1.0
EBLSQ1515H-15MH	15	200	1.8-2.2	50	0.15*1.0
EBLSQ1515H-10MH	10	150	2.0-2.5	40	0.2*1.0

- ※Inductance test : @1KHz/0.25v
- ※Hi-Pot: AC1.5KV/60sec
- ※Operating temperature: -25~+125°C
- ※Storage temperature: -25~+100°C
- ※Power range: 60-120W
- ※Design as customer's requested specifications

Recommended Board Layout & Circuits:

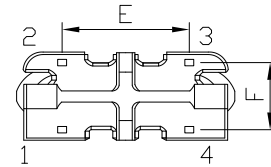
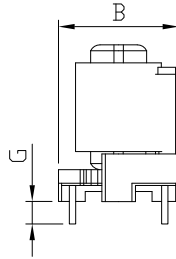
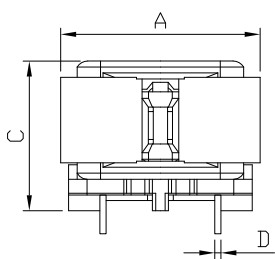


EBLSQ Series

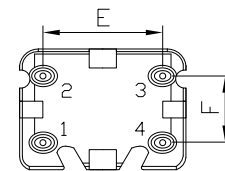
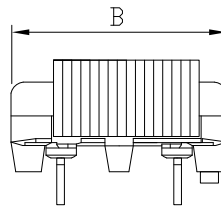
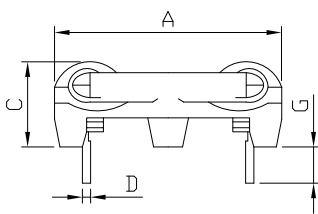
Common Mode Chokes- Frame Core Type
EBLSQ1918 Series:

TRIGON
COMPONENTS

Configuraions:



V Type



H Type

Dimensions (mm):

ITEM	A Max	B Max	C Max	D	E ± 0.5	F ± 0.5	G ± 0.5	Stype
EBLSQ1918V	23.5	14.0	25.5	0.8 ± 0.3	13.0	10.0	3.5	V
EBLSQ1918H	23.5	24.0	15.5	0.7 ± 0.1	13.0	10.0	3.5	H

EBLSQ Series

Common Mode Chokes- Frame Core Type
EBLSQ1918 Series:

TRIGON
COMPONENTS

Electrical Characteristics: @25°C

Item	Inductance L1=L2 (mH) Min	DCR (mΩ) Max.	Working Current (A)	Turn Ratio (Ts) Ref	WIRE (mm)
EBLSQ1918V-20MH	20	250	1.8-2.2	63	0.15*1.0
EBLSQ1918V-10MH	10	145	2.0-2.5	50	0.2*1.0
EBLSQ1918V-10MHA	10	145	2.5-3.0	50	0.2*1.5
EBLSQ1918V-8MH	8	105	2.3-3.5	44	0.25*1.0
EBLSQ1918V-6MH	6	100	3.5-4.0	41	0.25*1.5
EBLSQ1918V-5MH	5	100	4.0-5.5	35	0.3*1.5
EBLSQ1918H-25MH	25	350	1.5-2.0	73	0.13*1.0
EBLSQ1918H-20MH	20	250	1.8-2.2	63	0.15*1.0
EBLSQ1918H-10MH	10	145	2.0-2.5	50	0.2*1.0
EBLSQ1918H-10MHA	10	145	2.5-3.0	50	0.2*1.5
EBLSQ1918H-8MH	8	105	2.3-3.5	44	0.25*1.0
EBLSQ1918H-6MH	6	100	3.5-4.0	41	0.25*1.5
EBLSQ1918H-5MH	5	100	4.0-5.5	35	0.3*1.5

※Inductance test : @1KHz/0.25v

※Hi-Pot: AC1.5KV/60sec

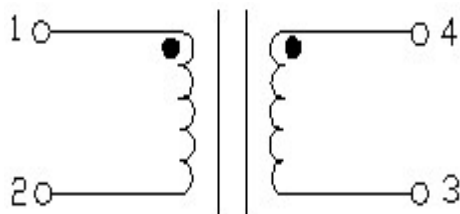
※Operating temperature: -25~+125°C

※Storage temperature: -25~+100°C

※Power range: 120-200W

※Design as customer's requested specifications

Recommended Board Layout & Circuits:

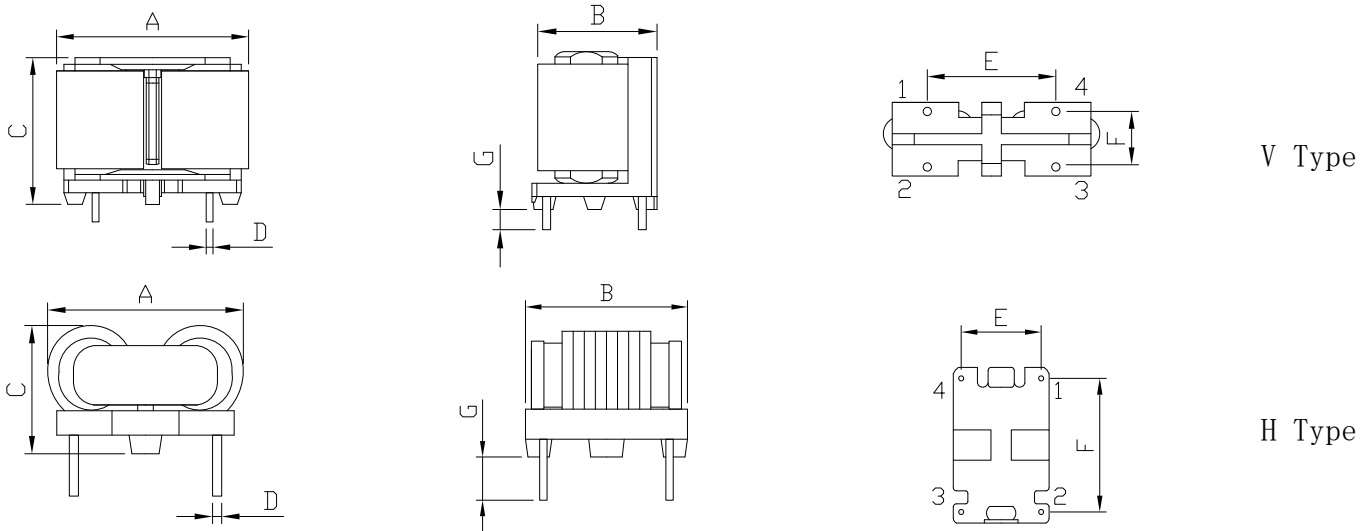


EBLSQ Series

Common Mode Chokes- Frame Core Type
EBLSQ2418 Series:

TRIGON
COMPONENTS

Configuraions:



Dimensions (mm):

ITEM	A Max	B Max	C Max	D ±0.1	E ±0.5	F ±0.5	G ±0.5	Stype
EBLSQ2418V	23.0	15.5	31.5	0.8	13.0	10.0	3.5	V
EBLSQ2418H	23.8	25.5	14.5	0.7	17.0	21.5	3.5	H

Electrical Characteristics: @25°C

Item	Inductance L1=L2 (mH) Min	DCR (mΩ) Max.	Working Current (A)	Turn Ratio (Ts) Ref	WIRE (mm)
EBLSQ2418V -15MH	15	150	2.5-3.0	67	0.2*1.5
EBLSQ2418V -10MH	10	100	4.5-5.5	48	0.3*1.5
EBLSQ2418V -5MH	5	75	6.0-7.5	38	0.4*1.5
EBLSQ2418V -2MH	2	50	10.0-12.0	24	0.6*2.0
EBLSQ2418H -15MH	15	150	2.5-3.0	67	0.2*1.5
EBLSQ2418H -10MH	10	100	4.5-5.5	48	0.3*1.5
EBLSQ2418H -5MH	5	75	6.0-7.5	38	0.4*1.5

※Inductance test : @1KHz/0.25v

※Hi-Pot: AC1.5KV/60sec

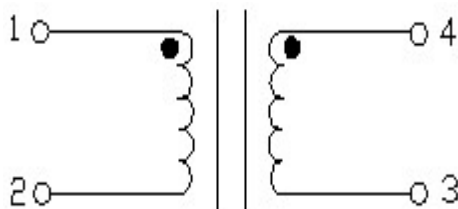
※Operating temperature: -25~+125°C

※Storage temperature: -25~+100°C

※Power range: 200-500W

※Design as customer's requested specifications

Recommended Board Layout & Circuits:

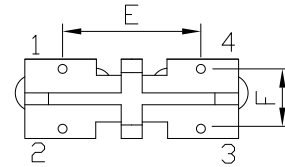
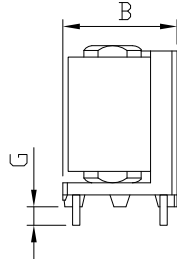
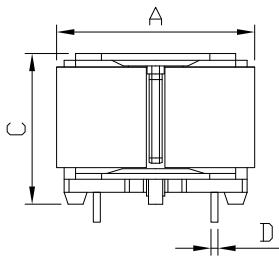


EBLSQ Series

Common Mode Chokes-Frame Core Type
EBLSQ2820 Series:

TRIGON
COMPONENTS

Configuraions:



V Type

Dimensions (mm):

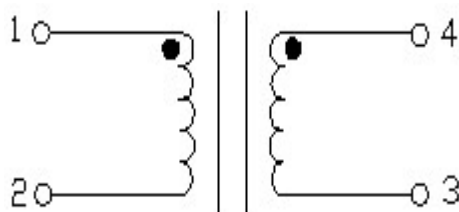
ITEM	A Max	B Max	C Max	D ±0.1	E ±0.5	F ±0.5	G ±0.5	Stype
EBLSQ2820V	26.0	16.0	35.0	0.8	13.0	10.0	3.5	V

Electrical Characteristics: @25°C

Item	Inductance L1=L2 (mH) Min	DCR (mΩ) Max.	Working Current (A)	Turn Ratio (Ts) Ref	WIRE (mm)
EBLSQ2820V -6MH	6	80	7.0-8.0	45	0.4*1.5
EBLSQ2820V -3MH	3	50	8.0-9.0	35	0.5*1.5
EBLSQ2820V -2MH	2	30	10.0-12.0	27	0.6*2.0

- ※Inductance test : @1KHz/0.25v
- ※Hi-Pot: AC1.5KV/60sec
- ※Operating temperature: -25~+125°C
- ※Storage temperature: -25~+100°C
- ※Power range: 500-1000W
- ※Design as customer's requested specifications

Recommended Board Layout & Circuits:

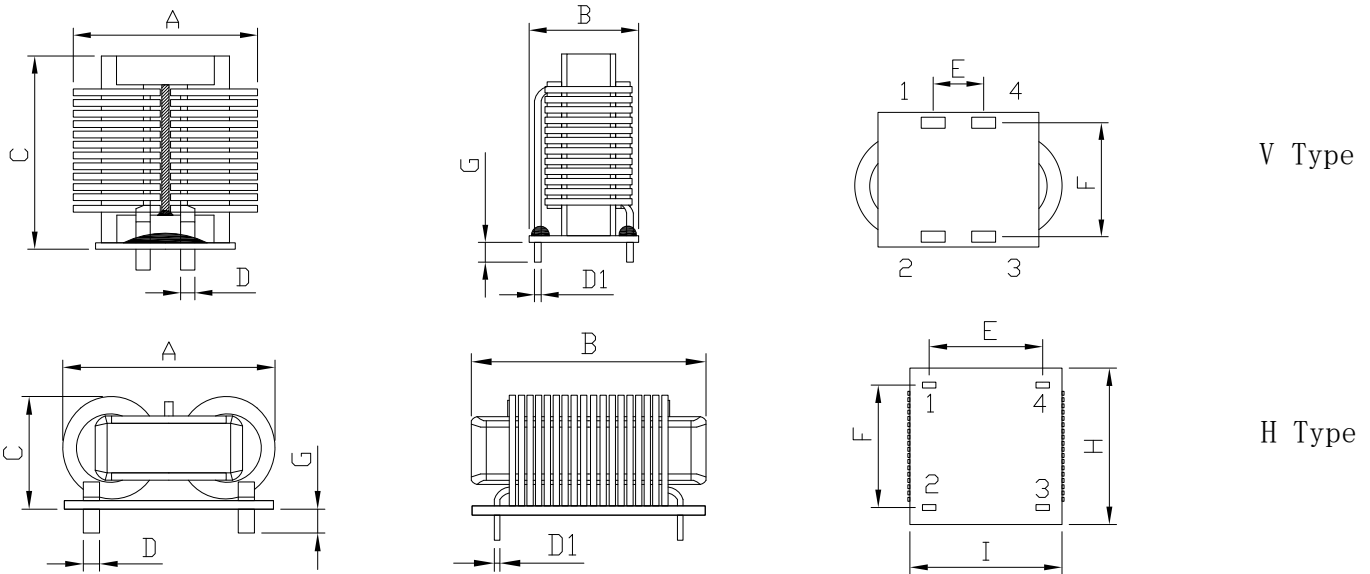


EBLSQ Series

Common Mode Chokes- Frame Core Type
EBLSQ3224 Series:

TRIGON
COMPONENTS

Configuraions:



Dimensions (mm):

ITEM	A Max	B Max	C Max	D	D1	E ±1.0	F ±1.0	G ±1.0	H ±1.0	I ±1.0	Stype
EBLSQ3224V	35.0	22.5	34.5	2.4-3.5	0.7-1.5	8.0	17.0	3.5	/	/	V
EBLSQ3224H	36.0	35.0	19.5	2.4-3.5	0.7-1.5	25.0	25.0	3.5	32.0	33.0	H

Electrical Characteristics: @25°C

Item	Inductance L1=L2 (mH) Min	DCR (mΩ) Max.	Working Current (A)	Turn Ratio (Ts) Ref	WIRE (mm)
EBLSQ3224V -2MH	2	50	12.0-16.0	23	0.8*2.5
EBLSQ3224H -2MH	2	50	12.0-16.0	23	0.8*2.5

- ※Inductance test : @1KHz/0.25v
- ※Hi-Pot: AC1.5KV/60sec
- ※Operating temperature: -25~+125°C
- ※Storage temperature: -25~+100°C
- ※Power range: 500-1000W
- ※Design as customer's requested specifications

Recommended Board Layout & Circuits:

