

RMEM Series

SMD Metal Film MELF Resistors

TRIGON
COMPONENTS



FEATURES

- Free direction for mounting due to cylindrical design.
- High solderability due to specially plated electrodes.
- High accuracy guaranteed (Resistance tolerance $\pm 0.25\%$ and T.C.R. $\pm 25\text{ppm}/^\circ\text{C}$)
- Electrodes strength is higher than flat chip resistor.
- Lower current noise than thick film flat chip resistors.
- RoHS Compliant.

ORDERING CODE

RMEM 1002 F BS T
(1) (2) (3) (4) (5)

(1) Series Name

(2) Resistance

4-Digit IEC Code (E-96)

(3) Tolerance

C: $\pm 0.25\%$, D: $\pm 0.50\%$
F: $\pm 1\%$, J: $\pm 5\%$

(4) Power Rating

A: 1/8W, AS: 1/8Ws
B: 1/4W, BS: 1/4Ws
C: 1/2W, CS: 1/2Ws
D: 1Ws, DS: 1Wss, ES: 2Ws
FS: 3Ws

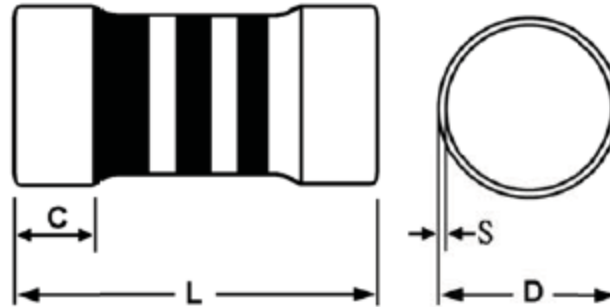
NOTE:

- s – Small Size
- ss – Ultra Small Size

(5) Packing Style

T: Taping
B: Bulk

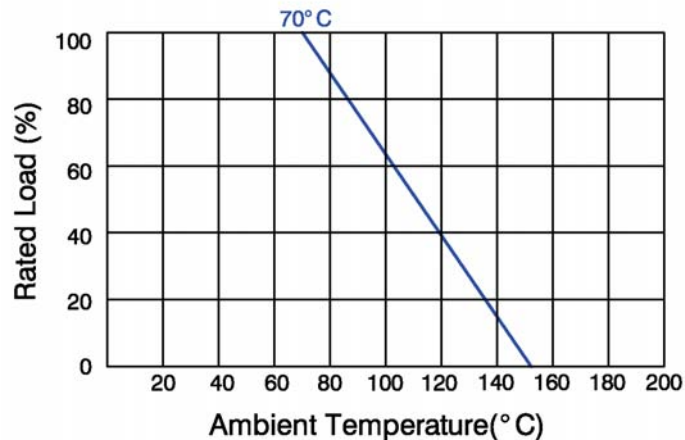
※Please refer to complete
Ordering Code document (RMx-Ord)
for more ordering options.



DIMENSIONS (mm)

STYLE	L	C	D	S
1/8Ws (0102)	2.0 \pm 0.1	0.55 \pm 0.1	1.3 \pm 0.1	0.1 \pm 0.05
1/8W, 1/4Ws (0204)	3.5 \pm 0.2	0.7 \pm 0.1	1.45 \pm 0.1	0.15 \pm 0.1
1/4W, 1/2Ws 1Wss (0207)	5.7 \pm 0.2	0.8 \pm 0.2	2.2 \pm 0.1	0.2 \pm 0.1
1Ws (0309)	8.5 \pm 0.3	1.7 \pm 0.2	3.0 \pm 0.3	0.3 \pm 0.1
2Ws (0411)	10.5 \pm 0.3	2.3 \pm 0.2	4.0 \pm 0.3	0.3 \pm 0.1
3Ws (0515)	14.5 \pm 0.3	2.3 \pm 0.2	4.5 \pm 0.3	0.3 \pm 0.1

DERATING CURVE



RMEM Series

SMD Metal Film MELF Resistors

TRIGON
COMPONENTS

Resistor

RATINGS

Type	Power Rating	Max. Working Voltage	Max. Overload Voltage	T.C.R.	Resistance Range & Tolerance			
					±0.1% ±0.25%	±0.50%	±1%	±5%
RMEM	1/8Ws	150V	300V	±15ppm ±25ppm ±50ppm ±100ppm	50Ω~56KΩ	50Ω~100KΩ	1Ω~1MΩ	0.22Ω~2MΩ
RMEM	1/8W 1/4Ws	150V	300V		100Ω~56KΩ	100Ω~100KΩ	1Ω~1MΩ	0.22Ω~2MΩ
RMEM		200V	400V		100Ω~56KΩ	100Ω~100KΩ	1Ω~1MΩ	0.5Ω~2MΩ
RMEM	1/4W 1/2Ws 1Wss	200V	400V		100Ω~100KΩ	10Ω~560KΩ	1Ω~5MΩ	0.22Ω~5MΩ
RMEM		300V	600V		100Ω~100KΩ	10Ω~560KΩ	1Ω~5MΩ	0.22Ω~5MΩ
RMEM		400V	700V		100Ω~100KΩ	10Ω~560KΩ	1Ω~5MΩ	0.5Ω~5MΩ
RMEM	1Ws	500V	1000V	±50ppm ±100ppm	-	10Ω~100KΩ	1Ω~1MΩ	0.1Ω~1MΩ
RMEM	2Ws				-	10Ω~100KΩ	1Ω~1MΩ	0.1Ω~1MΩ
RMEM	3Ws				-	10Ω~100KΩ	1Ω~1MΩ	0.1Ω~1MΩ

Rated-Voltage= $\sqrt{P (W) \times R (\Omega)}$ or Max. Working Voltage, whichever lower.

ENVIRONMENTAL CHARACTERISTICS

Performance Test	Test Method	Characteristics
Operating Temp. Range		-55°C ~ 155°C
Temp. Coefficient (ppm/°C)	JIS-C-5202; 5.2	100ppm/°C; 50ppm/°C 25ppm/°C; 15ppm/°C
Short Time Overload	Rating Voltage x 2.5 or Max. overload voltage for 5 sec. Whichever less	±(0.5%+0.05Ω)
Pulse Overload	Rating voltage x3 or Max. pulse overload voltage for 10,000 cycle (1 sec. "on" 25 sec. "off"), Whichever less	±(0.5%+0.05Ω)
Temperature Cycling	-55°C (30min.) / +85°C (30min) for 5 cycle	±(0.5%+0.05Ω)
Load Life in Humidity	40°C ± 2°C, 90%~95%RH, 1000h, 1.5h "on" / 0.5h "off" cycle	± (1%+0.05Ω)
Load Life	70°C ± 2°C, 1000h, 1.5h "on" / 0.5h "off"	± (1%+0.05Ω)
Resistance to Soldering Heat	260°C ± 5°C, 5 sec ± 1 sec	±(0.5%+0.05Ω)
Solderability	235°C ± 5°C, 2 sec ± 0.5 sec	90% Coverage / Min
Bending Test	Holding point width 90mm, Bending 5mm, 1 time	±(0.5%+0.05Ω)
Non-Combustibility	The resistors shall withstand Overload test in accordance With Article UL-94.V-0 without producing a fire hazard.	

Notes:

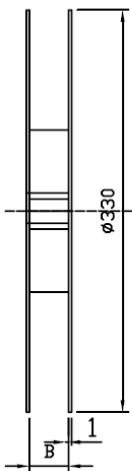
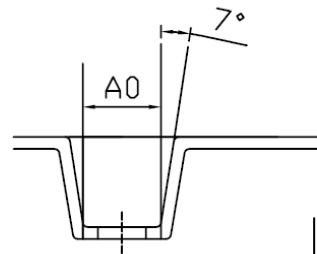
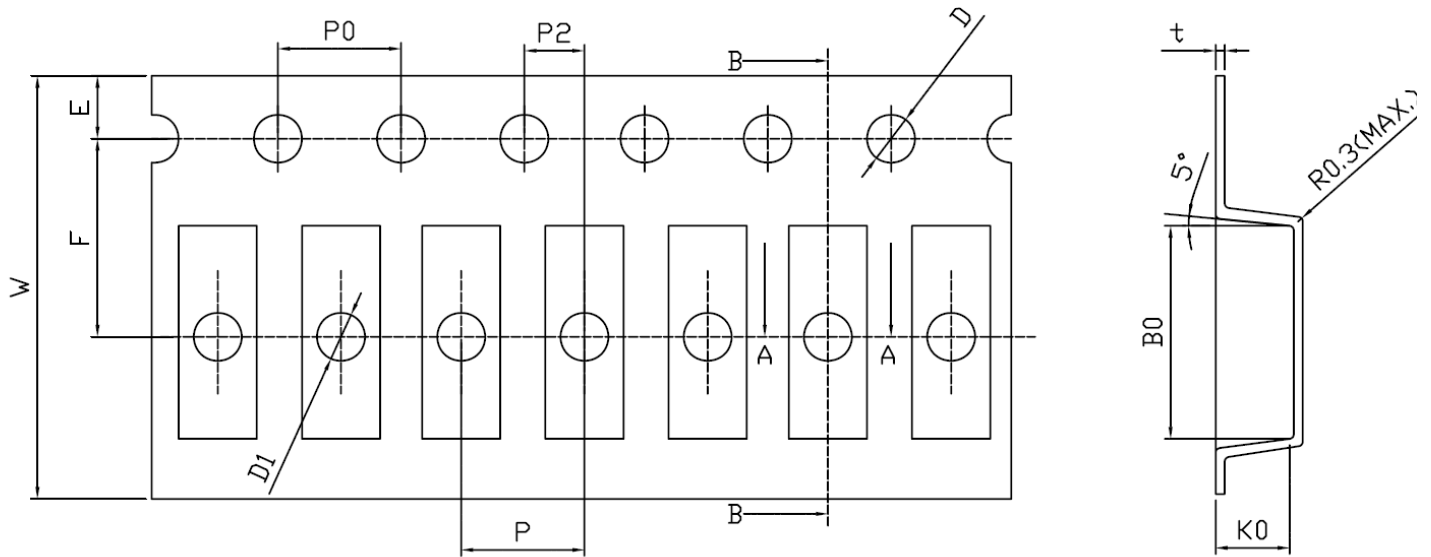
Trigon Components reserves the rights for revising the content of this catalog without further notification.

RMEM Series

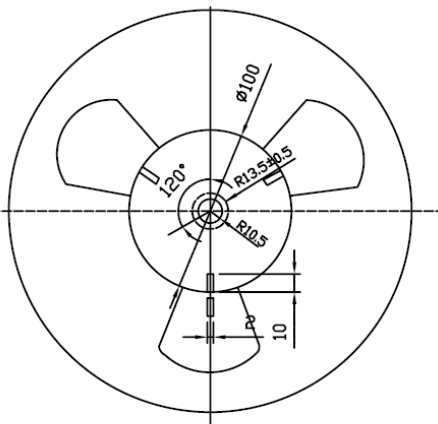
SMD Metal Film MELF Resistors

TRIGON
COMPONENTS

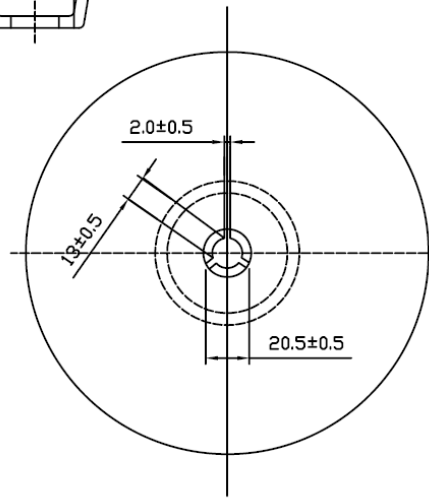
PACKAGING



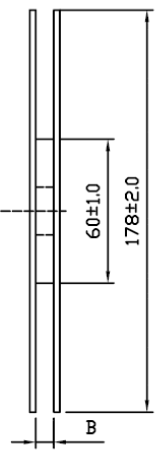
0309
0411 -Type



UNIT: (MM)



0102
0204-Type
0207



RMEM Series

TRIGON
COMPONENTS

SMD Metal Film MELF Resistors

Resistor

TYPE	RMEM-Type					
SIZE	3Ws	2Ws	1Ws	1/4W, 1/2Ws, 1Wss	1/8W, 1/4Ws	1/8W
W		24.00±0.30	16.00±0.30	12.00±0.10	8.00±0.10	8.00±0.10
P		8.00±0.10	8.00±0.10	4.00±0.10	4.00±0.10	4.00±0.10
E		1.75±0.10	1.75±0.10	1.75±0.10	1.75±0.10	1.75±0.10
F		11.5±0.10	7.50±0.10	5.50±0.05	3.50±0.05	3.50±0.05
P2		2.00±0.10	2.00±0.10	2.00±0.05	2.00±0.05	2.00±0.05
D		1.50±0.10	1.50±0.10	1.50±0.10	1.50±0.10	1.50±0.10
D1		1.50±0.10	1.50±0.10	1.50±0.10	1.50±0.10	1.50±0.10
P0		4.00±0.10	4.00±0.10	4.00±0.10	4.00±0.10	4.00±0.10
B		24.00±0.50	16.00±0.50	12.00±0.50	8.00±0.50	8.00±0.50
A0		4.20±0.10	3.30±0.10	2.40±0.10	1.60±0.10	1.50±0.10
B0		10.00±0.10	8.15±0.10	6.05±0.10	3.70±0.10	2.20±0.10
K0		4.20±0.10	3.35±0.10	2.50±0.10	1.65±0.10	1.50±0.10
t		0.35±0.05	0.35±0.05	0.30±0.05	0.22±0.05	0.22±0.05
PER REEL (PCS)		2000		2000	3000	